

# CADSMATIC



**eBrowser**

Gateway to globally distributed engineering

**eBrowser**  
Design Review &  
Communication tool

OPTIMIZING RESOURCES

# eBrowser

**Enables effective communication between all parties involved in plant design projects by linking all participants through the Internet**

The Internet-based Cadmatic eBrowser offers advanced features and possibilities in retrieving design-related data and in visualising engineering projects.

eBrowser is a powerful and easy-to-use tool developed for the benefit of plant owners and operators, equipment and process suppliers, as well as designers, and consultants. The design review and communication tool is particularly useful for project managers, installation supervisors, installers and maintenance staff.

eBrowser allows versatile visualisation of the desired parts of the project. You can, for instance, view either the entire plant or individual process systems and components of particular interest. eBrowser gives you the opportunity to virtually walk around in the plant while it is being designed. You can follow a pipeline to check the valve locations, walk along a service platform or ensure that the passages are high and wide enough.

Object data retrieval is effortless: simply click the desired piece of equipment on the screen and the position code, pipeline code, material, dimensions, standards and other details are immediately displayed on the screen. Related documents such as drawings, P&ID's, isometrics etc. can be viewed via hyperlinks as well.

## **Utilizing the 3D model and project information over the Internet**

The extremely fast eBrowser is a powerful tool for distributing design information over the Internet, using a regular Internet browser (Internet Explorer). The 3D model and the embedded design database can be published on a web server to give those participating in the project quick access to the 3D model and the project information. If there is no fixed Internet connection available, the 3D model can also be downloaded from the server and stored locally. The downloaded model can then be viewed even when travelling, using for instance a normal laptop computer. You can utilize design resources from where they are available and review the plant's 3D model and the progress of the project wherever you are. The Cadmatic eBrowser provides the client, the designer and the



start-up personnel with the possibility to monitor the project in real-time through a common 3D model and design database, thus allowing them to avoid distributing large amounts of documents from one location to another.

## **3D model facilitates global project management**

The easy-to-use Cadmatic browser also gives the client the time-saving opportunity to independently review designs and comment on them. The extremely useful markup function allows users to make markings and leave directions for specific devices and systems. Everyone involved in the project has access to the 3D model that replaces a large number of separate 2D drawings. This results in better and faster information flows and considerably easier up-dates.

## **Virtual 3D plant for design reviews**

With its advanced tools for visualisation, Cadmatic offers an efficient and easy-to-use alternative for on-site design reviews and inspections. Right from the initial design stage it is important to ensure that the service platforms, for example, are correctly dimensioned, or that issues related to safety or access for maintenance are sufficiently

considered. Using the 3D virtual plant model, you can present all important details effectively and clearly, in a way that is easy for everyone to understand. Cadmatic eBrowser offers an efficient means of viewing the design in 3D and retrieving the design data. It efficiently joins all the different project parties with the help of the Internet. For the first time clients, engineers, constructors and subcontractors can work together in real time and share information.

If the Cadmatic Plant Design System is used for your plant design project, the other project parties only need to install the eBrowser module on their computers to start viewing the model at their own location.

## **3D models at the installation site**

eBrowser has advanced features that are also useful for construction and installation. They can be used, for example, in visualising the time schedules of the contract, in planning the installation sequence, and in checking components that are already installed.

## **3D models for maintenance**

The 3D model also contains a large amount of useful design data for maintenance. With the help of the eBrowser it's possible to easily access equipment, pipeline and instrumentation data stored in the database. You can also link documents, such as drawings, easily to the 3D components, which is extremely convenient and saves time and trouble.

## **Easy intergration with other systems**

The design data of the 3D model is saved in XML format and eBrowser uses standard web technology, which makes it easy and straightforward to link it with other systems and databases, such as document management systems, maintenance systems and ERP systems.



**ENGINEERS**

**PLANT OWNERS**



**SUPPLIERS**





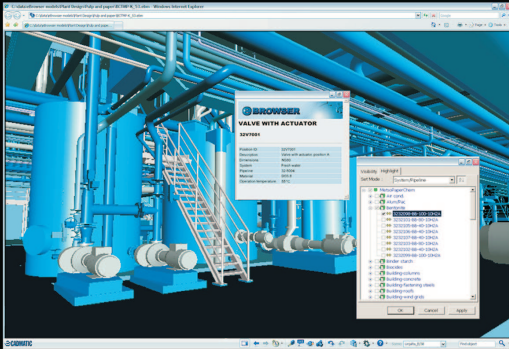
# Opens the Distributed Engineering World for You

## Easy to learn and adopt

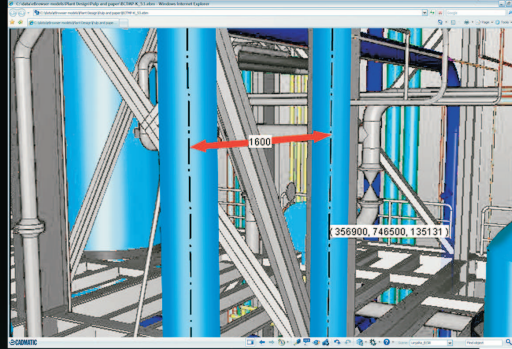
Cadmatic eBrowser is a fast and easy-to-use tool developed to optimize the communication between partners and transparency of design during all stages of the plant life cycle. The use of the software does not require special training. If you can use Internet Explorer you can use the Cadmatic eBrowser.

## Easy installation from the web

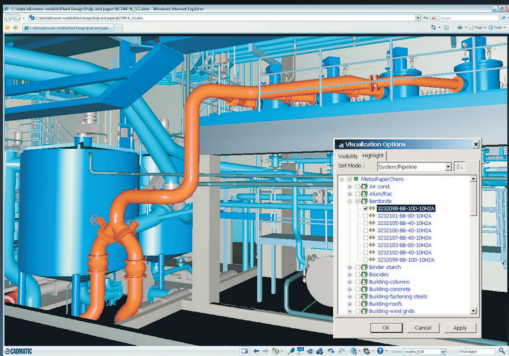
The installation of the eBrowser is made easy. Just download the light eBrowser version from: [www.cadmatic.com](http://www.cadmatic.com) and start using it. To get all the advanced benefits of the Cadmatic eBrowser, contact us for a full licenced version.



With the eBrowser you can see the data of each component in the model.



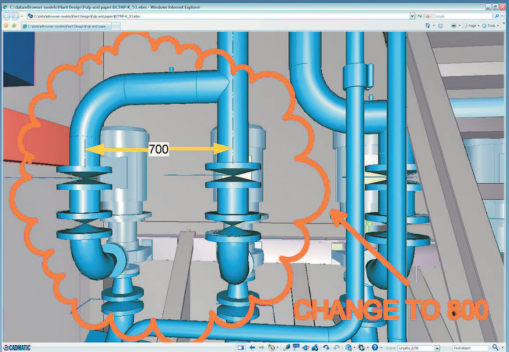
The eBrowser shows you the exact distance between two objects



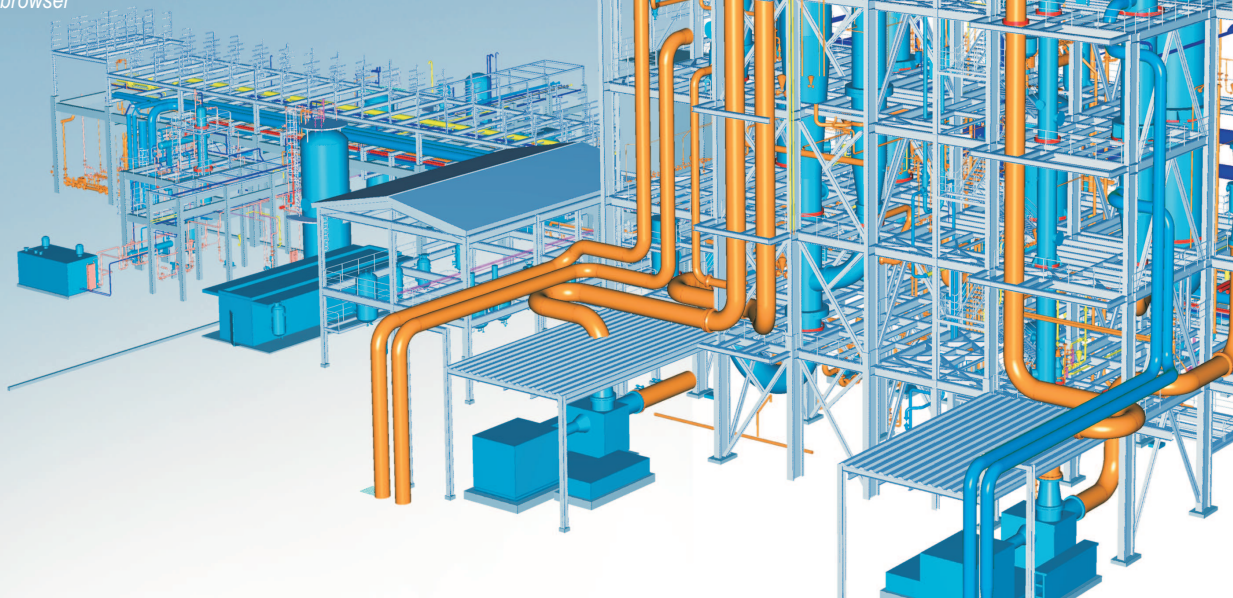
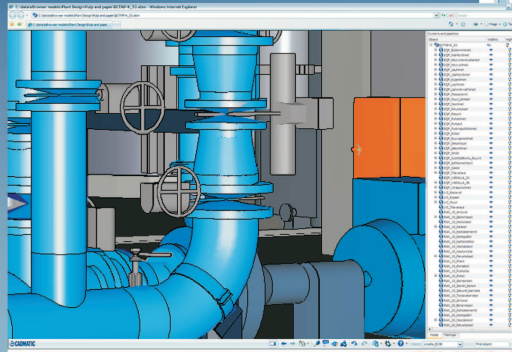
With the eBrowser you can indicate chosen components (e.g. latest changes)



The eBrowser is easy to link with documents and other databases



The mark-up feature allows eBrowser users to easily exchange comments directly in the browser







Cadmatic is a leading developer and supplier of 3D plant and ship design software and engineering data management solutions. Cadmatic's innovative and dedicated personnel are constantly working on the long-term development of our software solutions. Our technical expertise and dedication to understanding customer needs make Cadmatic your ideal long-term partner.

The close relationship between Cadmatic and its customers has allowed Cadmatic to keep its software up-to-date with the requirements of modern design, engineering, manufacturing, production and operating companies. Our growing list of references include over 4500 satisfied users in more than 40 countries worldwide. Cadmatic has a growing network of certificated sales and support centers in over 20 countries around the world. We pride ourselves on providing excellent service to our customers.

Cadmatic Ltd is part of Elomatic Ltd, a leading Scandinavian consulting and engineering company.



Cadmatic Oy  
Itäinen Rantakatu 72, 20810 Turku, Finland,  
tel. +358-2-412411, fax +358-2-412444,  
sales@cadmatic.com

[www.cadmatic.com](http://www.cadmatic.com)

## eBrowser

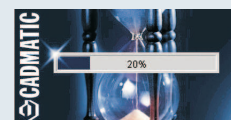
**Gateway to Globally  
Distributed Engineering**

### eBrowser can be used in:

- communication between parties involved in projects (designers, clients subcontractors, suppliers etc.)
- project management
- design reviews
- construction and commissioning
- training of operators
- reviewing design data during maintenance
- sales and marketing

### Special features of eBrowser:

- runs on a regular web browser (Internet Explorer)
- designers can distribute 3D models through a common web server to all parties involved
- with the browser, the models can be downloaded from the Internet, Intranet or, for instance, USB memory stick
- fast OpenGL visualisation and walkaround (fly through)
- straightforward and easy mouse operation
- easy access to desired objects in the model (e.g. latest updates)
- easy integration with other web-based systems (document management, maintenance and ERP software)
- easy configuration to meet specific demands by using VBScript or JavaScript
- quick client-to-designer feedback



**Download  
eBrowser Light  
FOR FREE**  
[www.cadmatic.com](http://www.cadmatic.com)